



# ONE STOP SHOP

FOR TWO WHEELER GARAGE EQUIPMENT

LIFTING EQUIPMENT | WORKSHOP EQUIPMENT | WHEEL SERVICE EQUIPMENT | BODYSHOP EQUIPMENT  
WASHING EQUIPMENT | N2 & AIR INFLATOR | AIR COMPRESSOR | EV TOOLS & EQUIPMENT

## ► LIFTING EQUIPMENT

### ► 2W PNEUMATIC LIFT - 180kg



#### ► Technical Specification

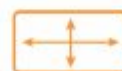
Lifting capacity	: 180 kg
Lifting time	: 12 sec
Max. lifting height	: 765 mm
Min. lifting height	: 250 mm
Platform size (LxW)	: 2000x700 mm
Safety mechanism	: Mechanical lock

#### ► Advanced Features

- Suitable for all Two Wheeler repairs
- Easy to mount and dismount two wheelers
- Rugged and durable



Lifting Capacity  
180 kg



Platform Size  
2000x700mm



Locking Mechanism  
Mechanical Lock

### ► 2W HYDRAULIC LIFT - 250kg



#### ► Technical Specification

Lifting capacity	: 250 kg
Lifting time	: 15 sec
Max. lifting height	: 900 mm
Min. lifting height	: 200 mm
Platform size (LxW)	: 2000x600 mm
Safety mechanism	: Mechanical lock

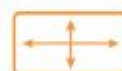
#### ► Advanced Features

- Zero Maintenance
- 3 stage safety Lock Self lubricator roller bushes for zero maintenance

\*Optional: Foot Operated Lift also available



Lifting Capacity  
250 kg



Platform Size  
2000x600mm



Locking Mechanism  
Mechanical Lock



Foot Operated Pump

## ▶ LIFTING EQUIPMENT

### ▶ 2W HYDRAULIC LIFT - 400kg



**Higher Capacity**  
**Wider Platform**  
**Faster ROI**

#### ▶ Technical Specification

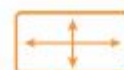
Lifting capacity	: 400 kg
Lifting time	: 20 sec
Max. lifting height	: 900 mm
Min. lifting height	: 200 mm
Platform size (LxW)	: 2250x750 mm
Safety mechanism	: Mechanical lock

#### ▶ Advanced Features

- Zero Maintenance
- 3 stage safety lock mechanism
- Wide platform with SS / MS top sheet
- Self-lubricating roller bushes
- Wheel service ramp included



Lifting Capacity  
400 kg



Platform Size  
2250x750mm



Locking Mechanism  
Mechanical Lock

### ▶ POWER PACK



#### ▶ Technical Specification

Motor	: 1ph, 230 V, 1 hp
Oil tank capacity	: 25 L
Operating mode	: Up / Down push button

#### ▶ Advanced Features

- Up to 8 lifts operation by single power pack

### ▶ 2W LIFT ACCESSORIES



Paddock Stand



Front Wheel Lock



Front Wheel Lock

# WORKSHOP EQUIPMENT

## TOOLS TROLLEY



### Advanced Features

- Sturdy Structure
- Easily maneuverable trolley with caster wheels
- Tool inserts for quick hand tool retrieval

## AIR FILTER & CHAIN CLEANER STAND



Air Filter Cleaner Stand

Chain Cleaner Stand

### Advanced Features

- Solid and long-lasting structure fabricated with stainless steel tubes and sheets

## INTEGRATED WORKSTATION



Storage Cabinet

Parts Storage

Tools Trolley

### Advanced Features

- Integrated workstation with storage cabinet, parts storage & tool trolley

## PARTS TROLLEY



### Advanced Features

- Designed for easy access and mobility
- Ergonomically designed to reduce operator fatigue

## SIDE TABLE



### Advanced Features

- Built-in storage spaces for wheel and silencer
- Designed to organize and store various types of fasteners

\*THE ABOVE MENTIONED PRODUCT'S DIMENSION CAN BE CUSTOMIZED BASED ON REQUIREMENTS

## ▶ DIAGNOSTIC & ALLIED EQUIPMENT

### ▶ BATTERY CHARGER & TROLLEY



#### ▶ Technical Specification

Charging Mode : Initial & Normal  
 Charging Current : 2 A & 4 A (Selectable)  
 Output Voltage : 12 V to 24 V (Selectable)  
 Current Selection : 2 A (Below 5 Ah)



#### ▶ Advanced Features

- Designed for easy access and mobility
- Easily maneuverable trolley with caster wheels

### ▶ SPARK PLUG TESTER & CLEANER



Before After

#### ▶ Advanced Features

- Spark plug cleaning with sand blasting- system which does not interfere with automobile combustion
- In-built tester & cleaner in single unit
- High working pressure and easily suitable

#### ▶ Technical Specification

Working pressure : 5-12 kg/cm<sup>2</sup>  
 Spark plug model : 10/14/18  
 Ignition coil : 17 kv  
 Weight : 7 kg  
 Power : 230 W

### ▶ PNEUMATIC TOOLS



#### ▶ Technical Specification

Bolt capacity : 14 mm  
 Working torque : 50-320 Nm  
 Max. torque : 352 Nm  
 Weight : 1.2 kg

#### ▶ Technical Specification

Bolt capacity : 10 mm  
 Free speed : 175 rpm  
 Max. torque : 68 Nm  
 Weight : 1.2 kg

#### ▶ Advanced Features

- Compact & Lightweight
- It is designed to achieve the best possible balance in hand, ensuring a secure hold for optimum nut and bolt work
- Easy to handle

### ▶ HAND TOOLS



Mechanical Tool Kit is a consists of wide range of spanners (DE & Ring), Screw Drivers, Hammers & sq. sockets etc.,

### ▶ PNEUMATIC HANGER



#### ▶ Advanced Features

- Very simple yet sturdy structure
- Double hose reel to enable two pneumatic guns to operate at a time
- Additional span to service two motorcycles side by side

# WHEEL SERVICE & ALLIED EQUIPMENT

## 2W WHEEL BALANCER - Motorized



### Technical Specification

Rim diameter	: 10" - 24"
Max. wheel weight	: 65 kg
Max. wheel dia.	: 1188 mm
Rim width	: 1.5" - 20"
Precision	: ± 1 g
Motor Power	: 0.25 kW
Power supply	: 100/230V 1ph
Rotation per min	: 200 rpm
Balancing time	: 10 sec

#### Equipped with:

12mm Shaft

#### Optional :

10mm & 14 mm Shaft



### Advanced Features

- The balancer has DYN/STA and different ALU balancing programs, this balancer has motorcycle balancing program
- The calibration is easy to proceed, the machine can quickly get back its precision
- The IMD display panel is resistant to scratch and erosion

## TYRE CHANGER - Motorcycle



### Technical Specification

Outside clamping range	: 6" - 24"
Inside clamping range	: 3" - 12"
Max. wheel dia.	: 960 mm
Working pressure	: 8-10 bar
Bead breaking force	: 2500 kg
Power supply	: 220V
Power	: 0.75kW
Rotation per minute	: 6.5/13rpm
Noise	: < 70dB

### Advanced Features

- Demounting head is made of special material - steel forging
- Drawer type pedal assembly - easy to disassembled and assemble for servicing the tyre changer
- The bead breaker system is compact design to make operation more easier

## INFLATOR - Nitrogen & Air



### Technical Specification

Model	ECO Wall Mount
Operating pressure	: 0-180 psi
Pressure setting	: 7-174 psi
Measuring resolution	: 0.5 psi
Input air supply	: 10-12 bar
Operating voltage	: 1 Ph, 230V, 50Hz

Nitrogen Inflater  
NitroFill

### Technical Specification

Model	NitroFill
Recommended input pressure	: 7 kg/cm <sup>2</sup>
Purity of Nitrogen	: 95-99 %
Storage tank size	: 60 Ltrs
N2 generating capacity	: 3500 LPH
Output pressure	: 10 kg/cm <sup>2</sup>
Operating voltage	: 1 Ph, 230V, 50Hz

## AIR COMPRESSOR - Reciprocating



### Technical Specification

Model	ATS 03 RD 16	ATS 05 RD 22
Motor power	: 3.0 hp/2.2 kW	5.0 hp/3.7 kW
Compressor speed	: 925 rpm	925 rpm
Max. working pressure	: 12.0 bar/175 psi	12.0 bar/175 psi
Free air delivery	: 261 lpm/9.2 cfm	439 lpm/15.5 cfm
Air receiver	: 160 Ltrs	220 Ltrs

### Advanced Features

- Low operational speed using high efficient IE2 6 pole motor
- Unique integrated drive with compact top block design
- Low Noise Level & Larger Aluminum inter & after coolers aiding 32% more heat transfer area

\*2hp with 1 Ph also available

# ► BODYSHOP EQUIPMENT

## ► 2W PAINTING STATION



COMPACT  
DESIGN



ECO  
FRIENDLY



EASY  
MAINTENANCE



SIMPLE  
CONSTRUCTION



HIGH  
DURABILITY

### ► Technical Specification

Type	: Open face, cross draft airflow
Overall size (LxWxH)	: 2500x2820x2374 mm
Internal size (LxWxH)	: 1800x2700x2100 mm
Filter type	: Paint arrester
Filter arrangement	: 2 rows x 2 columns
LED lights	: 4 Nos.
Exhaust blower	: Direct drive centrifugal backward inclined
Blowers	: 2 Nos.
Air flow	: $\geq 3700$ cmh
Power supply	: 3 Ph, 415 V, 50 Hz

### ► Advanced Features

- Dry arresting of paint without water and chemicals
- Over sprayed paint is absorbed by the blower through synthetic fiber glass filter
- Dynamically balanced Impeller Fan
- High Quality Filters, Easy to Replace
- Effective extraction system
- Releases clean air output to the atmosphere
- Ease of operation
- Ideal use for all type of paint applications

## ► 2W BAKING STATION



QUICK DRYING  
PROCESS



LOW  
ENERGY COST



HIGH QUALITY  
FINISH



INCREASED  
PRODUCTIVITY



USER  
FRIENDLY



### ► Technical Specification

Type	: Open face with curtains
Overall size (LxWxH)	: 1860x2840x2626 mm
Internal size (LxWxH)	: 1800x2700x2100 mm
Infra Red cassettes	: 4 Nos.
Infra Red lamp	: 12 (3 Lamps per cassettes)
Exhaust blower	: Direct drive centrifugal backward inclined
Air flow	: $\geq 2000$ cmh
Power supply	: 3 Ph, 415 V, 50 Hz

### ► Advanced Features

- Compact and simple installations
- Eco-Friendly and Non - Polluting
- The drying effect appears immediately after turning on the infrared emitters
- The equipment works without inertia - immediately after switching on it is ready to work

# ▶ WASHING EQUIPMENT

## ▶ 2W WASHER



HL 03 045  
(New Gen TPP)



P 12/28



P 36/30



Trigger Gun

### ▶ Technical Specification

Model	HL 03 045	P12/28	P 36/30
Displacement, lpm	: 17	11.5	17.5
Delivery per gun, lpm	: 17	11	17
No. of guns	: 1	1	1
No. of plungers	: 3	3	3
Operating pressure, kgf/cm <sup>2</sup>	: 45	18	45
Motor power, hp	: 3	1	2.5
Pump speed, rpm	: 1440	470	340
Type of mounting	: Base	Base	Base
Suction type	: Positive	Negative	Negative

### ▶ Advanced Features

- Direct driven
- Low maintenance cost
- Positive suction pump
- Jet/Spray options for engine compartment wash
- Trigger gun to reduce impact pressure at different application

## ▶ HIGH PRESSURE WASHER - POWER WASH



Cage Model



Trolley Model

### ▶ Technical Specification

Model	CAGE	TROLLEY
Max. operating pressure, bar	: 115	115
Flow rate, lpm	: 9	9
Power supply	: 3ph, 415 V, 50	3ph, 415 V, 50
Total connected load, hp	: 3	3
Working temperature, °C	: 5 to 45	5 to 45
Length of output hose, m	: 12	12
Type of gun	: Trigger Gun	Trigger Gun
On/off switch	: Available	Available
Trigger gun controlled pump	: Available	Available
Overall dimensions (LxWxH), mm	: 860x545x490	950x630x1060
Approximate weight, kg	: 65	70

### ▶ Advanced Features

- Low water consumption
- Designed for continuous running
- High pressure ensures heavy dirt cleaning
- Reduce operator fatigue with trigger controlled mechanism
- Low pressure mode for engine area cleaning
- Trolley model enables easy maneuverability



## ▶ WASHING EQUIPMENT

### ▶ 2W WASHING LIFT - SMART WASH DUO



#### ▶ Technical Specification

Lifting capacity	: 1000 kg
Max. lifting height	: 815 mm
Min. shut height	: 200 mm
Overall dimension (LxWxH)	: 2800x1410x200 mm
Lift color	: Hot dip galvanized
Safety mechanism	: Mechanical lock
Power supply	: 3 HP/2.2kW, 3 Ph

#### ▶ Advanced Features

- Only one man power required for complete operation
- Reduced operation time & operator fatigue
- Efficient utilization of water
- 360° access to all parts
- Improved productivity
- Minimum maintenance



WASHING OF THE VEHICLES SIMULTANEOUSLY



RUST-FREE GALVANIZED STRUCTURE



EFFORTLESS LOADING & UNLOADING OF VEHICLE



NO CIVIL WORK REQUIRED



CAN BE INSTALLED IN MULTI-STORYED WORKSHOP

### ▶ 2W WASHING LIFT - SMART WASH TURBO



#### ▶ Technical Specification

Max. washable bike size (LxWxH)	: 2210x1360x890 mm
Max. water consumption per bike	: 45 Litre
Max. Shampoo consumption per bike	: 20 ml
Cycle time per bike (without wiping)	: 52 sec.
Gun for wheel arch cleaning	: 1 No.
Power supply	: 3 Ph, 415 V, 50 Hz
Power requirement	: 7.5 hp
Space required (LxWxH)	: 4100x1450x2050 mm

#### ▶ Advanced Features

- Integrated under chassis wash
- Galvanized steel structure
- Front wheel lock system
- Latest & elegant dual tone design
- Separate gun for wheel arch cleaning



LESS WATER CONSUMPTION



GENTLE AND SAFE



SUPERIOR WASH QUALITY



LESS MAN POWER



NO CIVIL WORK REQUIRED

# ▶ WATER TREATMENT & RECYCLING EQUIPMENT

## ▶ 2W EFFLUENT TREATMENT PLANT



### ▶ Technical Specification

Flow rate	: 1000 lpm
Suction tubing	: 4/6 mm
Discharge tubing	: 4/6 mm
Dosing rate	: 6 mph @ 4 kg/cm <sup>2</sup>
Strokes / minute	: Max:400 Min:50
Fuse	: 600 mA
Level switch interlock	: Normally open
Relay output	: Normally open. Closes in case pump stop for any reason
Power supply	: 1 Ph, 230 V, 50 Hz



COMPACT  
UNIT



PLUG & PLAY  
OPERATION



USER  
FRIENDLY



NO MAJOR CIVIL  
WORK REQUIRED



MAINTAINS  
STATUTORY NORMS

## ▶ 2W WATER RECYCLING PLANT



### ▶ Technical Specification

Waste water handling capacity	: 1000 lph
Media filter	: FRF filter media
Sludge handling system	: Sludge bag holder
System dimension	: 4x3x4 m
Filter dimension	: 1.55x0.6x1.6 m
Sludge bag frame dimension	: 1.85x0.55x0.9 m
Power supply	: 2.5kW, 230 V, 50 Hz

### ▶ Advanced Features

- Exclusively designed for handling vehicle wash waste water
- Faster sludge settling technique
- Less volume of sludge generation
- Automatic dosing method, no need of dedicated manpower
- Automatic disposal of sludge from main equipment
- Automatic sensing of dry run to safeguard the recycling plant
- Clear recycled water
- Up to 100% water recovery
- Zero waste water disposal charges
- Limitless recycling & fully automatic



COMPACT  
FOOTPRINT



LIMITLESS  
RECYCLING



100% WATER  
RECOVERY



CLEAR RECYCLED  
WATER

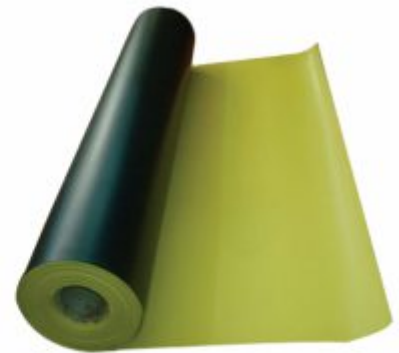
# ELECTRIC VEHICLE SERVICE EQUIPMENT

## INSULATED PERSONAL PROTECTIVE EQUIPMENT KIT



# Honeywell

## PPE KIT



### Technical Specification

Product Range : Full Work Wear, Helmet, Rubber Mat  
Safety Shoes & Hand Gloves  
Compliance Standard : IEC EN 60903:2014 Certified  
Compatible Range : Max. 1000 V AC / 1500 V DC

## INSULATED MEASURING INSTRUMENTS



### Technical Specification

**Model** : HV Insulation Resistance Tester  
Insulation Test Range : 0.01 M $\Omega$  - 10 G $\Omega$   
Various voltages, such as 50 V, 100 V,  
250 V, 500 V & 1000 V can be measured

**Model** : Special HV Tester  
Voltage Range : Max. 1000 V AC, 1500 V DC  
Resistance Range : 10 K $\Omega$  - 1999 K $\Omega$   
Compliance Standard : IEC 61557; 61557-1:2007; 61557-2:2007;  
61557-4:2007

## INSULATED HAND TOOLS



### Technical Specification

Tools Range : Spanners, Combination Pliers, Screw Drivers,  
Socket Sets & Torque Wrenches  
Compliance Standard : IEC EN 60900 Certified  
Compatible Range : Max. 1000 V AC / 1500 V DC

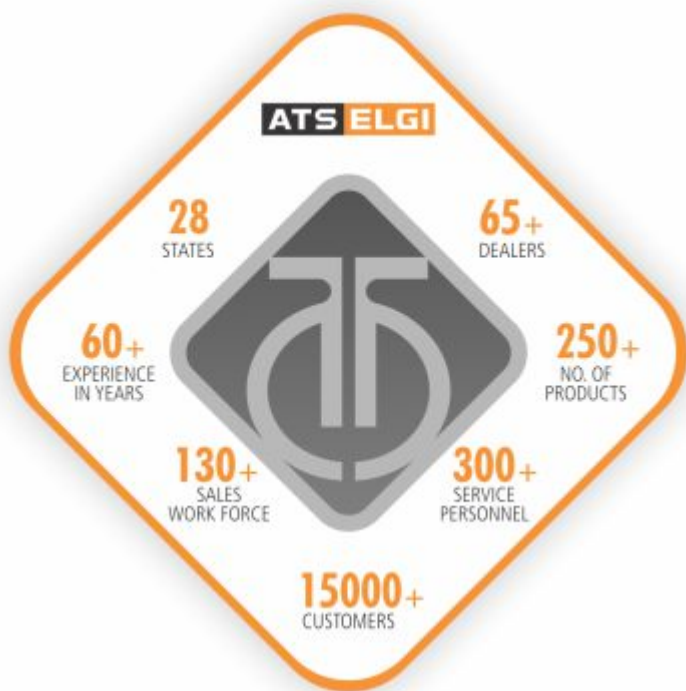
## About ATS ELGI

EMPOWERING THE  
AUTOMOTIVE SERVICE INDUSTRY  
FOR MORE THAN 6 DECADES

ATS ELGI is the largest manufacturer and distributor of Automotive Service Equipment in India. With our "One Stop Shop" approach, we offer the widest range of garage equipment in the country. Working closely with Authorised OEM workshops and Private Garages compliments our profound understanding of the vehicle servicing business since 1960.

ATS ELGI is a wholly owned subsidiary of **ELGI** Equipments Limited, a Global Player in the air compressor business.

### OUR STRENGTH



### OUR NETWORK



\*due to continuous product improvement, specifications and design are subject to