



ONE STOP SOLUTION

WHEEL SERVICE EQUIPMENTS - COMMERCIAL VEHICLES

WHEEL ALIGNER | WHEEL BALANCER | TYRE CHANGER | LIFTING | COMPRESSOR | AC RECOVERY

About ATS ELGI

EMPOWERING THE
AUTOMOTIVE SERVICE INDUSTRY
FOR MORE THAN 6 DECADES



ATS ELGI is the largest manufacturer and distributor of Automotive Service Equipment in India. With our "One Stop Shop" approach, we offer the widest range of garage equipment in the country. Working closely with Authorised OEM workshops and Private Garages complements our profound understanding of the vehicle servicing business since **1960**.

ATS ELGI is a wholly owned subsidiary of **ELGI** Equipments Limited, a Global Player in the air compressor business.



LIFTING EQUIPMENT | BODY SHOP EQUIPMENT | WHEEL SERVICING EQUIPMENT | WASHING EQUIPMENT | LUBE EQUIPMENT
DIAGNOSTIC EQUIPMENT | PNEUMATIC TOOLS | MOBILE SERVICE UNIT | SPECIAL PRODUCTS

COMMERCIAL VEHICLE 3D WHEEL ALIGNER - EAGLE 4i X4, X5 & X6

ATS ELGI

Suitable For     



Features & Benefits

- One Step alignment up to 6 Axles
- Capable of measuring trucks with wheelbase up to 16 meters
- Machine vision system automatically recognizes the targets that are installed on the wheels
- High resolution Wide scope cameras
- VODI - Auxiliary target display for target setting
- 4 Compensation modes available. Forward rolling compensation - First in class in this segment
- Compact and easy targets, no need to calibrate it & easy to handle
- Wheel adapters are self-centering with the mobile central part fit 12" -24"
- In addition to HCV, ATS ELGI Truck Wheel Aligner is capable of measuring LCV and PCV which has Wheel base more than 2m
- Frame reference, baseline reference and Axle reference are available
- Bluetooth remote control ensures easy operation



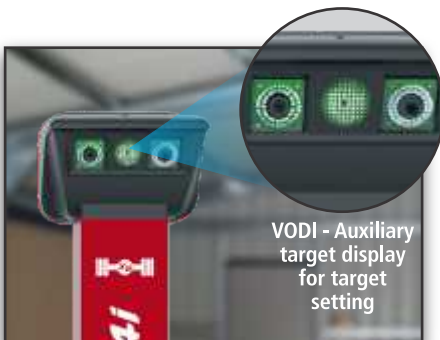
One Step alignment up to 6 Axles*



RUNOUT - Forward rolling compensation
"First in class in this segment"



One Step Caster Swing for Twin steer axles



VODI - Auxiliary target display for target setting

High resolution wide scope cameras



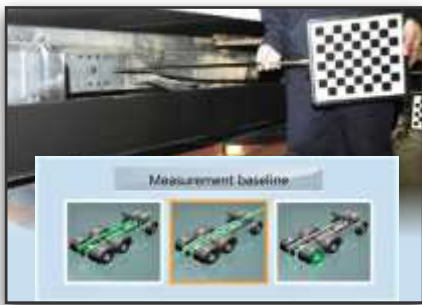
Compact, light weight and durable magnesium alloy targets



All results in single page

* X4 - One Step Alignment up to 4 Axles
* X5 - One Step Alignment up to 5 Axles

Compatibility for all type of Axles



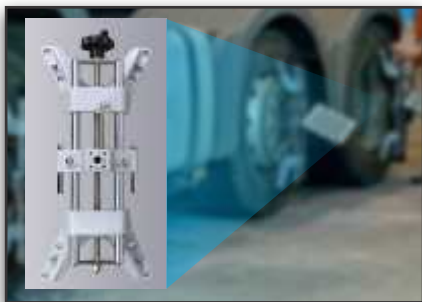
Inbuilt 3 types measurement - Frame reference, Baseline reference & Axle reference



Trailer - Forward parking, Reverse parking & Drive through mode is available



Icon based axles selection



Wheel adapters are self-centering with the mobile central part fit 12"-24"



Bluetooth remote ensures easy operation



Powerful and reliable alignment software

TECHNICAL SPECIFICATION
EAGLE 4i
EAGLE 2i

PARAMETERS	MEASUREMENT RANGE	ACCURACY IN MEASUREMENT
FRONT WHEEL ALIGNMENT :		
Camber	±8°	±2'
Front total toe	±5°	±2'
Caster	±19°	±5'
SAI / KPI	±19°	±5'
Lock angle	±45°	±5'
REAR WHEEL ALIGNMENT :		
Camber	±8°	±2'
Rear total toe	±5°	±2'
SYMMETRY ANGLES :		
Front set back	±2.5°	±2'
Rear set back	±2.5°	±2'
Thrust angle	±2.5°	±2'
Geometrical driving axis	±2.5°	±2'

COMMERCIAL VEHICLE 3D WHEEL ALIGNER - EAGLE 4i X2

ATS ELGI

Suitable For



Features & Benefits

- Capable of measuring trucks with wheelbase up to 16 meters
- Machine vision system automatically recognizes the targets that are installed on the wheels
- Compact and easy targets, no need to calibrate it & easy to handle
- Wheel adapters are self-centering with the mobile central part fit 12"-24"
- In addition to HCV, ATS ELGI Truck Wheel Aligner is capable of measuring LCV and PCV which has Wheel base more than 2m
- Axle reference and Frame measurement are available
- Bluetooth remote control ensures easy operation

COMMERCIAL VEHICLE 3D WHEEL ALIGNER - EAGLE 4i X2 PORTABLE

Suitable For



Features & Benefits

- 5 camera multi axle wheel aligner
- Capable of measuring trucks with wheelbase up to 16 meters
- Machine vision system automatically recognizes the targets that are installed on the wheels
- Compact and easy targets, no need to calibrate it & easy to handle
- Wheel adapters are self-centering with the mobile central part fit 12"-24"
- In addition to HCV, ATS ELGI Truck Wheel Aligner is capable of measuring LCV and PCV which has Wheel base more than 2m
- Axle reference and Frame measurement are available
- Bluetooth remote control ensures easy operation

COMMERCIAL VEHICLE 3D WHEEL ALIGNER - EAGLE 2i



Features & Benefits

- Capable of measuring trucks with wheelbase up to 16 meters
- Machine vision system automatically recognizes the targets that are installed on the wheels
- Compact and easy targets, no need to calibrate it & easy to handle
- Wheel adapters are self-centering with the mobile central part fit 12"-24"
- In addition to HCV, ATS ELGI Truck Wheel Aligner is capable of measuring LCV and PCV which has Wheel base more than 2m
- Axle reference and Frame measurement are available
- Bluetooth remote control ensures easy operation

PROMINENT FEATURES

Variants	Eagle 4i X4	Eagle 4i X5	Eagle 4i X6	Eagle 4i X2	Eagle 4i X2 Portable	Eagle 2i
Compatible for alignment of buses, trucks, trailers and cars	Y	Y	Y	Y	Y	Y
Compatible for alignment of articulated buses (drive through)	Y	Y	Y	Y	Y	Y
Compatible with Multi axles (up to 16 wheel vehicle)	Y	Y	Y	Y	Y	Y
Simultaneous alignment of axles	4 Axles	5 Axles	6 Axles	2 Axles	2 Axles	2 Axles
Sequential alignment of 6 axles	Y	Y	X	Y	Y	Y
Drive through option	Y	Y	Y	Y	Y	Y
Alignment of trailers above 4 axles in reverse parking by repeat measurement mode with single sequence	Y	Y	Y	Y	Y	Y
Sequential alignment of trailers up to 4 axles by reverse parking	Y	Y	Y	Y	Y	Y
Simultaneous alignment of trailers up to 4 Axles in forward parking and reverse parking	Y	Y	Y	Y	Y	Y
Display of toe in "Deg. Min" "Deg" "mm" "Inch" & other angles "Deg. Min" "Deg"	Y	Y	Y	Y	Y	Y
Export option for old reports	Y	Y	Y	Y	Y	Y
Compatible for aligning multiple steer axle	Y	Y	Y	Y	Y	Y
Camera coverage (camera to last target plate)	19m	19m	19m	19m	19m	16m
Upgradation to models	X5 & X6	X6	X	X	X	X

WHEEL BALANCER - ATS 46

ATS ELGI

Suitable For



Technical Specifications

Rim diameter	: 1" to 28"
Max. wheel weight	: 200 kg
Max. wheel diameter	: 1200 mm
Rim width	: 1.5" to 20"
Accuracy (Car/Truck)	: ±1 gm / ±10 gm
Second time mounting test	: < 5 gm
Motor power	: 0.37 kW
Power supply	: 230V, 1 Ph
Rotation per minute	: 80 - 200 rpm
Balancing time	: 9 - 20 s

Features & Benefits

- Automatic acquisition of diameter and distance of the wheel
- Six o'clock stick on mode with laser indicating line, fast and convenient
- Machine is integrated with Pneumatic lift for lifting the tyre
- Inverter technology gives different speed to the motor and makes it effective & accurate
- Machine can stop the wheel automatically in its unbalanced position



1200mm



1"-28"



200 kg



2"-20"



Car 9 sec
Truck 20 sec



Frequency
Conversion



Pneumatic Lifter

The machine is integrated with pneumatic lift, efficiently and labour saving.



Display

With a soft touch button, won't break until 2,00,000 times touch



LED illumination

LED illuminator for easy and clear operation with laser indicating line



Oil-Water Separator

Effective filter of water and gas impurities in the Air compressor, to extend the service life of the mechanical structure of the equipment, to avoid rusting, wearing of important parts



Haweka Lock Nut

HAWEKA quick lock system imported from Germany, with five hundred thousand clamping service lift and high precision balance ratio



Universal Adapter

Designed for five-hole Rims, cover all models, high-efficiency and accurate positioning of the center hole, the tyres will not shake under high-speed running

WHEEL BALANCER - SP

ATS ELGI

Suitable For    



Technical Specifications

Rim diameter	: 10" to 24"
Max. wheel weight	: 200 kg
Max. wheel diameter	: 1200 mm
Rim width	: 1.5" to 20"
Accuracy (Car/Truck)	: ±1 gm / ±10 gm
Second time mounting test	: < 5 gm
Motor power	: 0.37 kW
Power supply	: 230V, 3 Ph
Rotation per minute	: 80 - 200 rpm
Balancing time	: 9 - 20 s

Features & Benefits

- Compatibility of balancing HCV, LCV and PCV vehicles
- Manual braking for easy application of weights
- Machine can stop the wheel automatically in its unbalanced position
- Integrated with pneumatic lift, efficient and labour saving
- Wheel guard ensures safety operation
- User friendly software



1200mm



10"-24"



200 kg



1.5"-20"



Car 9 sec
Truck 20 sec



Car 100 rpm
Truck 200 rpm

Foot Brake

With foot brake, can accurately find the balance position



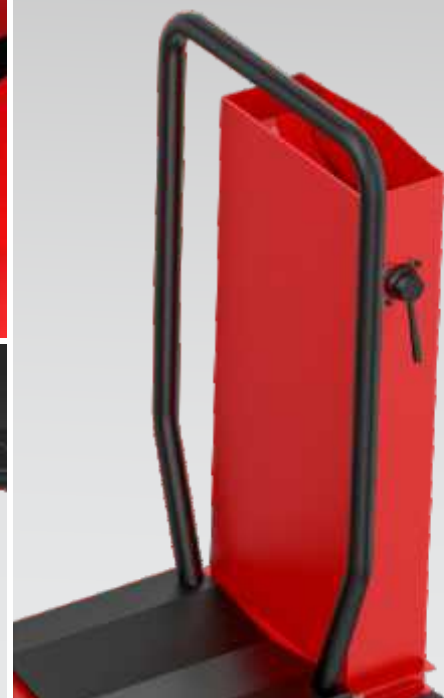
Display

Increase the digital tube display data, convenient for users to watch high resolution digital tube display window, make the data more intuitive



Wheel Lifter

Equipped with a tyre lifter, so that the installation of tyres would be time-saving, labour saving



TYRE CHANGER - JUMBO

ATS ELGI

Suitable For



Technical Specifications

Rim diameter	: 14" to 46"
Rim width	: 1100 mm
Max. wheel diameter	: 2200 mm
Hydraulic power	: 130 to 150 bar
Hydraulic motor power	: 1.5 kW
Main shaft motor power	: 2.4 kW
Power supply	: 380V, 3 Ph

Features & Benefits

- Fully automatic tyre changer adopts pneumatic and hydraulic power control system
- Dual speed main shaft motor can improve efficiency
- Lifting arm oil tank is equipped with double safety protection system
- Handles both tube type and tube-less type tyres



2200mm



14"-46"



1100 mm



130-150 bar



Lifting Arm

Lifting arm cylinder is center supported, bear pressure average

Lifting arm and base are made of strengthened and thickened metal, with high intensity

Lifting arm cylinder equipped safety protection device to increase the safety of operation



Operating Station

Movable operating station can be fully observed during operation to prevent danger by mishandling



Electric Cabinet

The electric cabinet adopted CE level protection standard



Reducer

The gearbox is made of aluminum alloy die casting, with light weight, beautiful appearance, high intensity and good sealing performance



TYRE CHANGER - TRUCK

ATS ELGI

Suitable For



Technical Specifications

Rim diameter	: 14" to 26"
Rim width	: 1000 mm
Max. wheel diameter	: 1600 mm
Hydraulic power	: 130 to 150 bar
Hydraulic motor power	: 1.5 kW
Main shaft motor power	: 1.8 kW
Power supply	: 380V, 3 Ph

Features & Benefits

- Super duty electric motor and hydraulic drive for superior torque and wheel holding power
- Self centering hydraulic clamping chuck
- Quick positioning and locking mount / demount arm
- Two in one speciality - both tube and tubeless tyres can be removed



1600mm



14"-26"



1000 mm



130-150 bar

Operating Station

Movable operating station can be fully observed during operation to prevent danger by mishandling



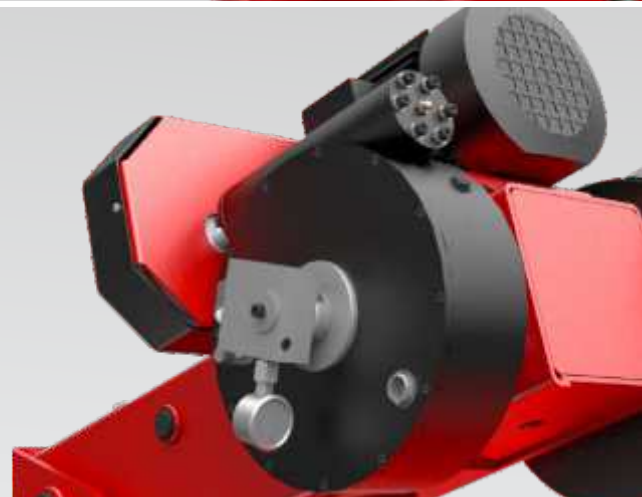
Hydraulic Pump Station

The hydraulic pump station adopts imported components with stable performance



Reducer

The gearbox is made of aluminum alloy die casting, with light weight, beautiful appearance, high intensity and good sealing performance



Suitable For



Technical Specifications

Lifting capacity per column	: 5.5 / 7.5 tons
Number of columns	: 4 / 6
Lifting time up/down	: 90 sec
Max. lifting height	: 1820 mm
Motor power per column	: 2.2 kW, 3 hp, 3Ph
Adjustable fork arm	: 240 - 600 mm
Accommodate wheel size	: 380 - 1156 mm

Features & Benefits

- Suitable for Light, Medium & Heavy duty vehicles
- Remote control Operations
- No dedicated bay required
- Can be used both indoor & outdoor
- Automatic trouble shooting & debugging
- Overload protection enabled
- Peak limit switch incorporated
- Automatic leveling ensures column synchronization

Accessories - Axle Stand*



A
(1345 - 1895 mm)



B
(850 - 1350 mm)



C
(400 - 550 mm)

***Optional**



HEAVY DUTY PIT JACK

ATS ELGI

Suitable For



Technical Specifications

Lifting capacity	: 20 Tons
Lifting time	: 42 Sec
Max. lifting height	: 164 mm
Min. lifting height	: 75 mm (without adaptors)
Overall dimensions (LxWxH)	: 986 x 390 x 508 mm
Operation type	: Electro-hydraulic
Oil grade*	: ISO grade 68 or equivalent
Oil tank capacity	: 12 Litres
Motor power	: 2.2 kW, 3 hp, 3 ph
Power supply	: 415 V / 50 Hz
Operating mode	: Push button for up/down movement

*Recommended to use ATS ELGI Hoist Lube oil

Features & Benefits

- Electro-hydraulic operations
- In-built power pack eliminates hose routings
- Adaptors suits wide range of vehicles
- Heavy duty rollers for smooth movement
- Single Power Pack enables 2 nos. Jack lifting
- Chrome plated roller for higher durability



Suitable For



Technical Specifications

Refrigerant type	: R134a
Service procedure	: Fully automatic or manual
Display	: LCD
Scale resolution	: 10 g
Vacuum pump	: 170 ltr/min
Refrigerant bottle capacity	: 40 liters, refillable
Hoses	: 6 meters
Sealed compressor	: 21 cc, high-pressure
Working temperature	: 11/49° C
Power supply	: 220-240 V AC 50/60 Hz

Features & Benefits

- Alarms high pressure, full bottle, empty bottle
- Service alarm : Acoustic and visual, for maintenance and filter replacement
- Automatic onboard bottle filling
- Automatic leak check during vacuum phase
- Automatic discharge of non-condensable gases from the bottle
- Software update via internet and RS-232 serial port
- Printout available
- Automatic operation reduce dependency on user
- Software and database can be updated easily



NITROMAX - N2 INFLATOR

Suitable For



Features & Benefits

- 95 to 97% pure nitrogen
- Air - Nitrogen dual mode
- Inflation counter for tyre filling management

Technical Specifications

Input pressure	: 12 kg/cm ²
Purity of Nitrogen	: 95-99 %
Storage tank size	: 250 Ltrs (External)
N ₂ generating capacity	: 8000 lph
Output pressure	: 10 kg/cm ²
Weight	: 208 kg
Operating voltage	: 230/50 V/Hz

1" AIR IMPACT WRENCH

ATS ELGI

Suitable For



Technical Specifications

Model No	: ATS7488
Bolt capacity	: 50 mm
Working torque	: 280 - 2200 Nm
Max. torque	: 3000 Nm
Free speed	: 3600 RPM
Weight	: 16 kg
Avg. air consumption	: 40 cfm 1140 L/min

Features & Benefits

- Stable and smooth torque output during operation
- Extended anvil to reach into deep tyre wells for lug nut removal
- Ergonomic design of the handle, and greatly reduce operating strength



AIR COMPRESSOR

ATS ELGI

Suitable For



QUICKEST ROI
 PROMISE WITH

24%
 ASSURED LOWER POWER COST

Direct Drive Advantage



Unique Integrated Drive With Compact Top Block Design



Low Operational Speed Using **High Efficient IE2 6 Pole Motor**



Common Cooling Fan For **Energy Efficiency & Power Saving**



Optimized Design of Piston & Rings For Longer Life



Larger Aluminium Inter & After Coolers Aiding **32% More Heat Transfer Area**



*Provision to Run Top Block Independently Based on Varied Air Demand - **Demand Based Utilization**

Premium Features*



Maximum Ambient **50°C/122°F**



More Flow **8%**



Low Noise Level **70 - 75 dB(A)**



Lesser Footprint **12%**



Less Oil Change Cost **57%**



Reduced Service Cost **19%**

*Average value across HP range

Technical Specification

Model	Power		Comp. Speed	Max. Working Pressure		Free Air Delivery		Dimension In mm			Weight	Air Receiver
	HP	kW	rpm	bar (g)	psi (g)	lpm	cfm	Length	Width	Height	kg	Litre
ATS 03 RD 16	3.0	2.2	950	12	175	261	9.2	1310	570	1020	160	160
ATS 05 RD 22	5.0	3.7	960	12	175	439	15.5	1590	595	1045	190	220
ATS 07 RD 22	7.5	5.6	960	12	175	680	24	1640	635	1110	255	220
ATS 10 RD 50*	10.0	7.5	960	12	175	906	32	1915	635	1175	400	500
ATS 15 RD 50*	15.0	11.0	960	12	175	1359	48	1910	782	1183	500	500

- Free air delivery measured in accordance with IS 5456 at a rated pressure of 10 kg/cm²
- Due to continuous engineering improvement, technical specifications are subject to change without prior notice
- *Available as Duplex model only

Typical Compressed Air Supply System

